

Wheatland Crossing School

Annual Education Results Report &
Education Plan 2022-2025

Cultivating Success

Our vision is to be a community where every student is a success story in the making.



WCS provides a safe environment where students are encouraged to take risks that will allow them to acquire and develop the skills needed to reach their full potential.

Our mission is to Work together, Cultivate resilient learners, while Striving for success.



Our Story



Wheatland Crossing School was founded in 2017 and is the designated school for students living in the East Wheatland area. The region is predominantly rural and encompasses the communities of Cluny, Gleichen, Hussar, Rockyford, Rosebud, and Standard. Some students from the rural area east of Strathmore and Siksika Nation also attend WCS. WCS offers programming to students K to 12 and a host of extracurricular activities for our 400 students. It is the collaborative community at WCS that enables meaningful opportunities for students to develop knowledge, skills, and attitudes to be successful lifelong learners.

Our Staff



Accountability Statement

The Annual Education Results Report for Wheatland Crossing School for the 2022 - 2023 school year was prepared in accordance with requirements of Alberta Education and Golden Hills School Division. The school is committed to using the results in this report to improve achievement for students. Results are used to develop effective strategies for our Three Year Education Plan ensuring that all WCS students acquire the knowledge, skills and attitudes they need to be connected, responsible, caring and contributing members of society.

Key Priorities

For the 2022/23 school year Wheatland Crossing will continue to focus on the following as our key priorities in our Assurance Framework.

1. Enhance strategic instruction practices to further enhance and support success for all learners.
2. Foster a safe and caring learning environment through connection and collaboration with all members of the community.
3. Provide students experiences to actively engage in meaningful learning opportunities that promote critical thinking, collaborative skills, and citizenship.

Fall 2022 Required Alberta Education Assurance Measures - Overall Summary

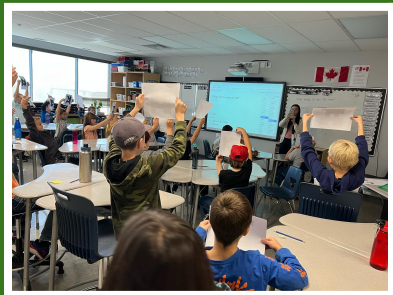
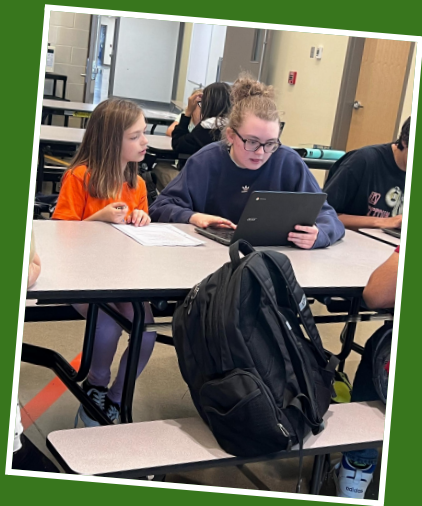
Assurance Domain	Measure	Wheatland Crossing School			Alberta			Measure Evaluation		
		Current Result	Prev Year Result	Prev 3 Year Average	Current Result	Prev Year Result	Prev 3 Year Average	Achievement	Improvement	Overall
Student Growth and Achievement	Student Learning Engagement	80.9	84.2	n/a	85.1	85.6	n/a	n/a	n/a	n/a
	Citizenship	76.6	76.8	76.8	81.4	83.2	83.1	Intermediate	Maintained	Acceptable
	3-year High School Completion	91.1	83.9	93.2	83.2	83.4	81.1	Very High	Maintained	Excellent
	5-year High School Completion	96.4	100.0	100.0	87.1	86.2	85.6	Very High	Maintained	Excellent
	PAT: Acceptable	71.9	n/a	81.3	67.3	n/a	73.8	n/a	n/a	n/a
	PAT: Excellence	20.8	n/a	22.7	18.0	n/a	20.6	n/a	n/a	n/a
	Diploma: Acceptable	69.8	n/a	79.0	75.2	n/a	83.6	n/a	n/a	n/a
	Diploma: Excellence	14.0	n/a	11.3	18.2	n/a	24.0	n/a	n/a	n/a
Teaching & Leading	Education Quality	86.2	86.6	91.3	89.0	89.6	90.3	Intermediate	Declined	Issue
Learning Supports	Welcoming, Caring, Respectful and Safe Learning Environments (WCRSLE)	85.2	81.5	n/a	86.1	87.8	n/a	n/a	n/a	n/a
	Access to Supports and Services	80.3	80.2	n/a	81.6	82.6	n/a	n/a	n/a	n/a
Governance	Parental Involvement	75.2	71.1	77.9	78.8	79.5	81.5	Intermediate	Maintained	Acceptable

1

Enhance strategic instruction practices to further enable and support success for all learners.

Focused Strategies

- ★ Implement research based strategies and support in numeracy and literacy across all grade levels.
 - GHSD Literacy and Numeracy Foundational Frameworks.
 - K-9 focus on developing student fluency in math leveraging GHSD supports and evidence informed practice.
- ★ Progress monitoring student success and responding in appropriate ways.
 - Leveled Literacy Intervention.
 - Early Literacy and Numeracy programs.
 - Daily five program.
 - Small group instruction.
 - Regular small group staff meetings and communication to develop strategies to support students who are socially at risk
 - FNMI liaison for additional support in academics and attendance for students.
- ★ Professional learning on effective assessment and reporting strategies for all teachers.
 - Develop and implement grade 7-12 school communication of learning plan.
 - Align assessment practices to develop a culture of learning.
 - Continue to communicate student achievement in a variety of ways.
- ★ Support teacher growth through GHSD instructional coaches.
- ★ Embedded time for professional learning community.
- ★ Increase Career Counseling and Career Exploration opportunities for High School students.
 - Work experience opportunities for high school students

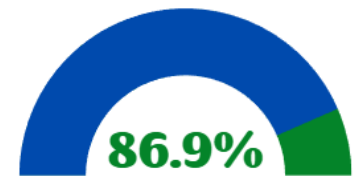


2

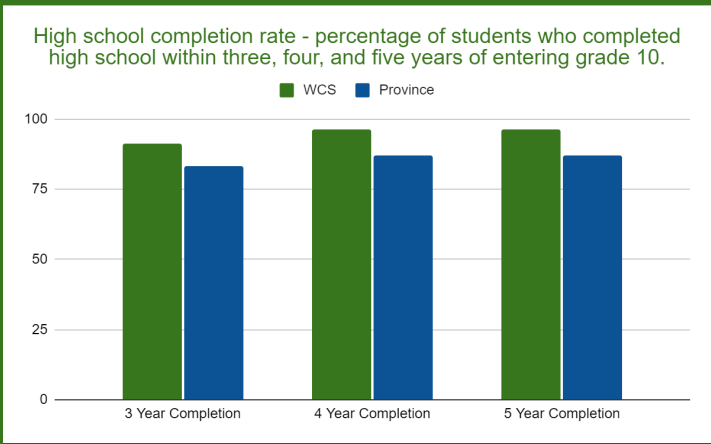
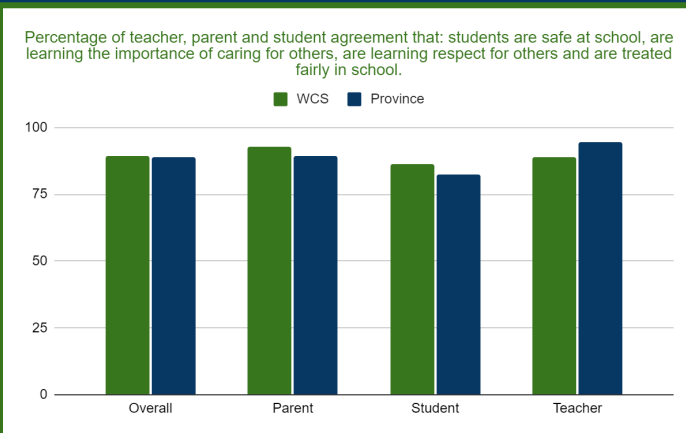
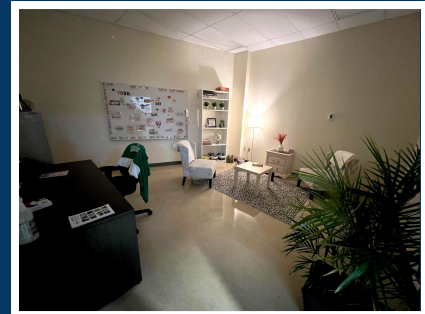
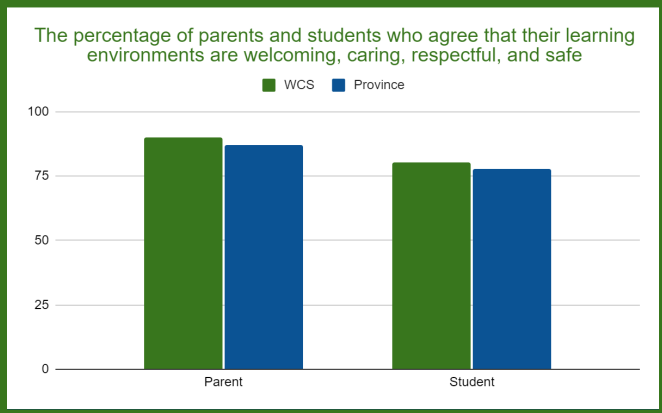
Foster a safe, caring, and inclusive learning environment through connection and collaboration with all members of the community.

Focused Strategies

- ★ Continue working collaboratively with our Family School Resource Counselor to support student well-being
 - Mind-Up program for Grades K-6
 - Social & Emotional counseling.
- ★ Continue to create opportunities that foster community and a sense of belonging
 - School spirit events
 - K-12 Student Conference Day
 - Christmas Festival, dinner, and charities.
 - Grad Cake Auction.
 - Extra curricular activities.
 - Student recognition events and programs.
- ★ Develop an understanding of FNMI cultures, values, and beliefs
 - Pookaiks and Niitsitapi Clubs
 - Princess and Warrior Pageant
 - Chief and Council
- ★ Continue to develop ways to engage families
 - Monthly parent newsletters,
 - Timely posts on social media and website.
 - Updated school sign.
 - Wheatland Crossing Parent Council.
 - Community events - open houses, festivals, concerts, learning conferences.
 - Powerschool and google classroom
 - Inviting community members into the school to support student learning and community connections.



The percentage of teachers and parents who agree that students are taught attitudes and behaviors that will make them successful at work when they finish school.



3

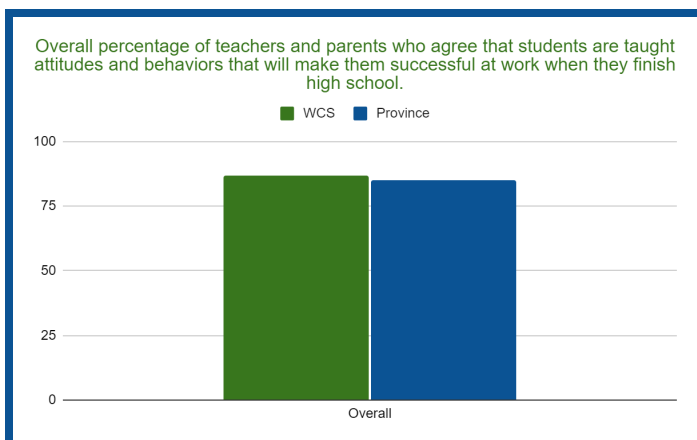
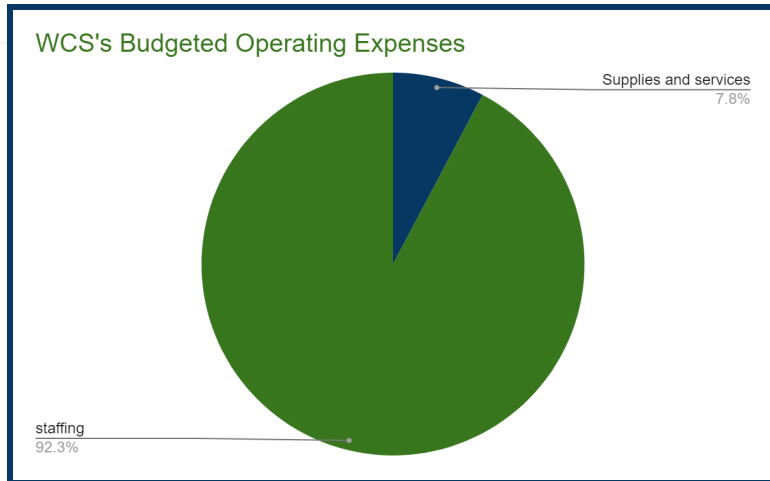
Provide students experiences to actively engage in powerful learning opportunities that promote critical thinking, collaborative skills, and citizenship.

Focused Strategies

- ★ Continue to develop an agriculture focus in all grade levels.
 - Fish in schools program.
 - School farm visits both virtually and in person.
 - Hydroponics gardens and garden boxes.
 - Aggie Days.
 - Agriculture option class.
- ★ Engage students in opportunities to learn about hydroponic gardens and natural seasons for planting, maintaining, and harvesting.
- ★ Continue to implement authentic opportunities for students to be innovative and responsive in various career and technology scenarios.
 - Skills Canada Day
 - Maker days grade 5-8
 - Leverage technology to enhance and inspire learning.
- ★ Continue to offer construction, welding, mechanics, drama, art, cosmetology, culinary arts, outdoor education, and work experience.
- ★ Increase co-curricular learning opportunities
- ★ Continue school leadership opportunities
 - Peer tutoring
 - Buddy program
 - Leadership classes
- ★ Determine and implement ways to increase student choice and voice in programming offered in grade 7-12.



Wheatland Crossings Yearly Budgeted Operating Expenses



Our priorities at WCS are to allocate our budget to ensure that nearly all of our available resources stay in the classroom to support students universally.

We continue to leverage grants to offer our K-6 students free hot lunch every day and to subsidize lunch for our grade 7-12 students.

Support from the community allows WCS to supplement our available technology allowing students to have readily available access to technology to further develop their skills in innovation and careers.



